



# GMT MONTHLY MEMBERSHIP PROGRESS REPORT

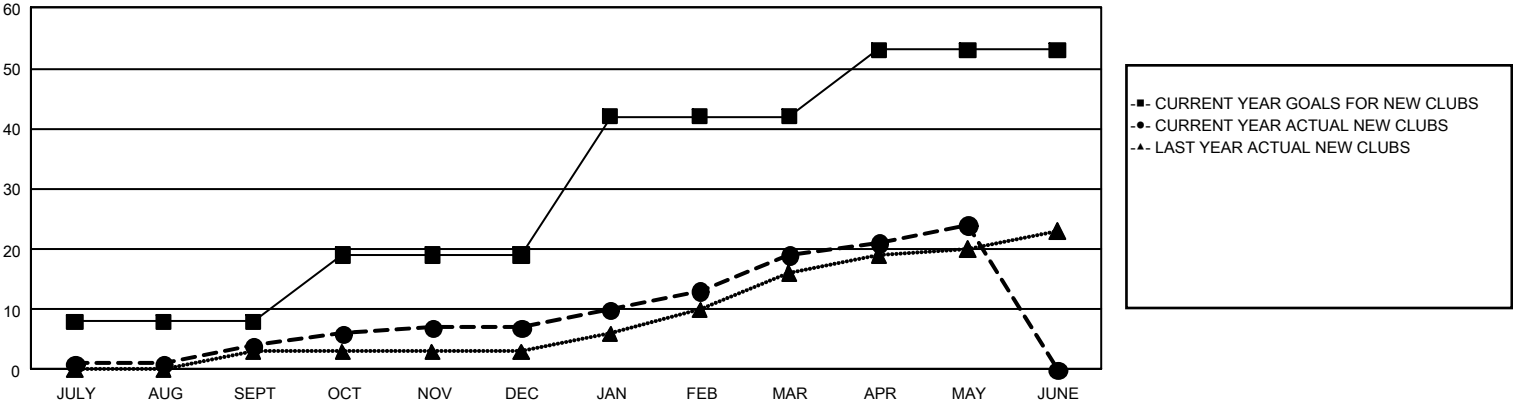
## GAT Constitutional Area 5 - Japan

Results as of: 5/31/2025

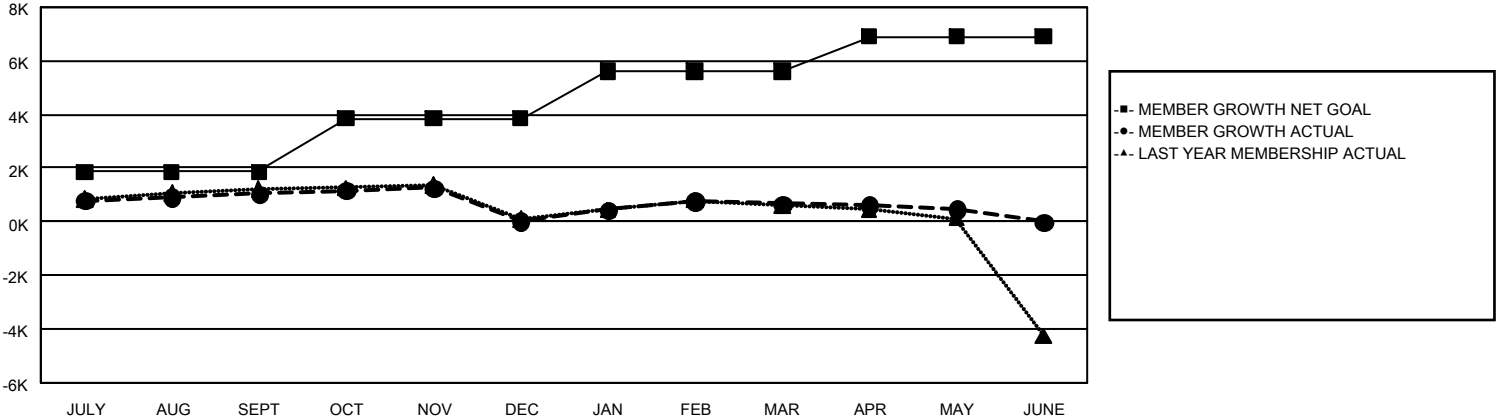
REPORT DOES NOT INCLUDE CLUBS IN UNDISTRICTED AREAS.

Clubs				Members			
RESULTS FOR 2024-2025				RESULTS FOR 2024-2025			
QUARTER	NEW CLUB GOAL	NEW CLUBS	DROPPED CLUBS	QUARTER	MEMBER GROWTH NET GOAL	MEMBER GROWTH ACTUAL	DROPPED MEMBERS ACTUAL (including transfers)
JULY/AUG/SEPT	8	4	3	JULY/AUG/SEPT	1,850	2,829	1,555
OCT/NOV/DEC	11	3	11	OCT/NOV/DEC	1,994	1,433	2,334
JAN/FEB/MAR	23	12	6	JAN/FEB/MAR	1,787	2,186	1,406
APR/MAY/JUNE	11	5	0	APR/MAY/JUNE	1,271	1,275	1,316

GOALS AND ACTUAL NEW CLUBS CUMULATIVE



GOALS AND ACTUAL MEMBERS CUMULATIVE



DROPPED CLUBS: 20		1,857 CLUBS OF 2,725 ADDED 1 OR MORE NEW MEMBERS	<u>GENDER DISTRIBUTION</u>	
			MALE	72,388 (77.41%)
			FEMALE	21,106 (22.57%)
<u>DROPPED MEMBERS</u>		<a href="#">CLICK HERE FOR CUMULATIVE MEMBERSHIP DATA</a>		
DECEASED	724		TOTAL FAMILY UNIT MEMBERS 25,985	
CLUB CANCELLED	68			
OTHER	5,683		FAMILY MEMBERS PAYING HALF DUES 14,441	
TOTAL	6,475			